

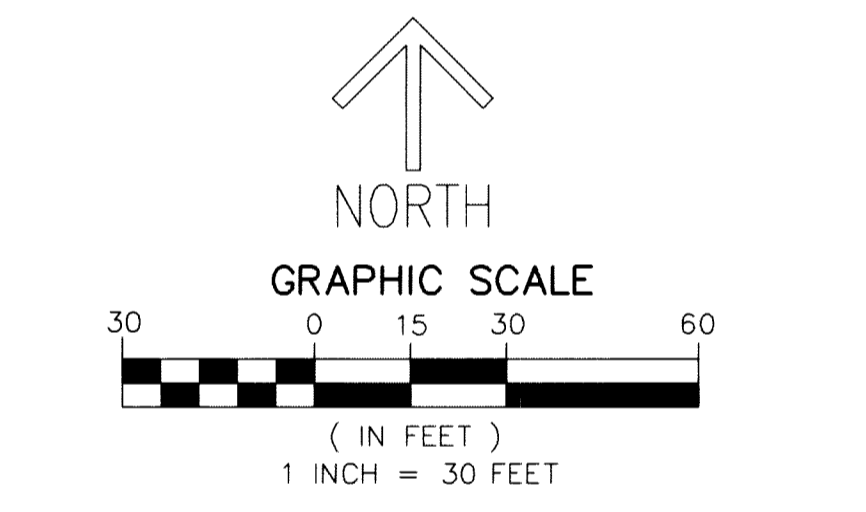
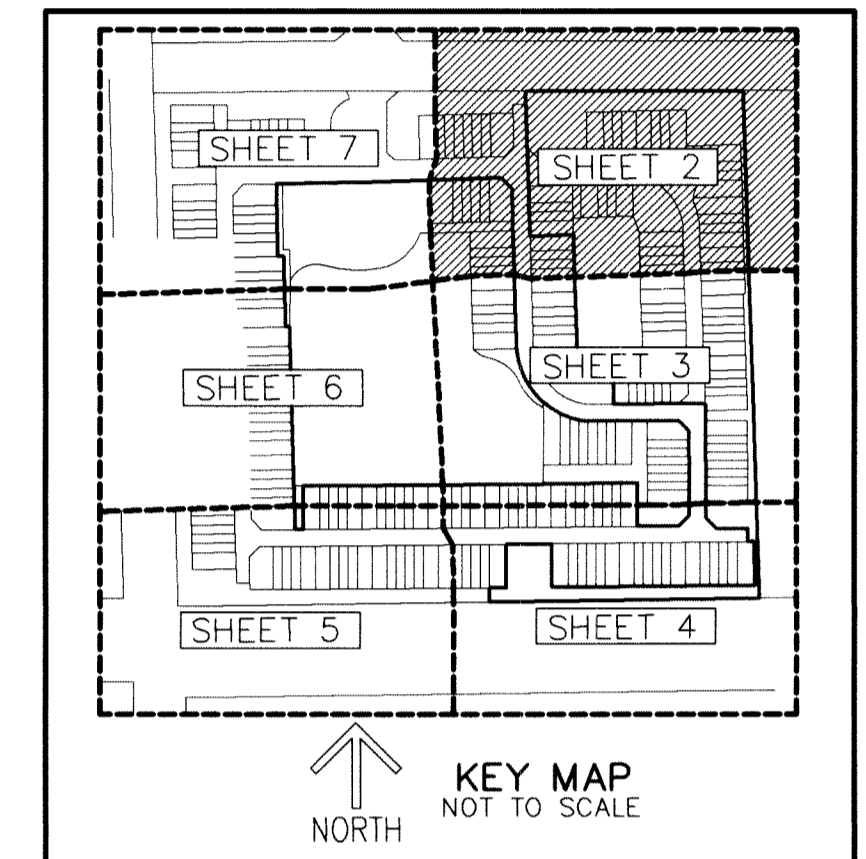
THIS INSTRUMENT PREPARED BY  
 DAVID P. LINDLEY  
 OF  
**CAULFIELD and WHEELER, INC.**  
 SURVEYORS - ENGINEERS - PLANNERS  
 7900 GLADES ROAD, SUITE 100  
 BOCA RATON, FLORIDA 33434 - (561)392-1991  
 CERTIFICATE OF AUTHORIZATION NO. LB 3591

# FLAVOR PICT TOWNHOMES PUD REPLAT

A PLANNED UNIT DEVELOPMENT  
 BEING A REPLAT OF LOTS 9 THROUGH 13, 24 THROUGH 44 AND 187 THROUGH 218; TRACTS R-5, REC-1, W, OS-2, OS-3, OS-4 AND OS-5,  
 FLAVOR PICT TOWNHOMES PUD, ACCORDING TO THE PLAT THEREOF,  
 AS RECORDED IN PLAT BOOK 121, PAGES 193 THROUGH 201 OF THE PUBLIC RECORDS OF PALM BEACH COUNTY, FLORIDA,  
 TOGETHER WITH A PORTION OF THE SOUTHEAST ONE-QUARTER OF SECTION 2, TOWNSHIP 46 SOUTH, RANGE 42 EAST, PALM BEACH COUNTY, FLORIDA

24

SHEET 2 OF 7

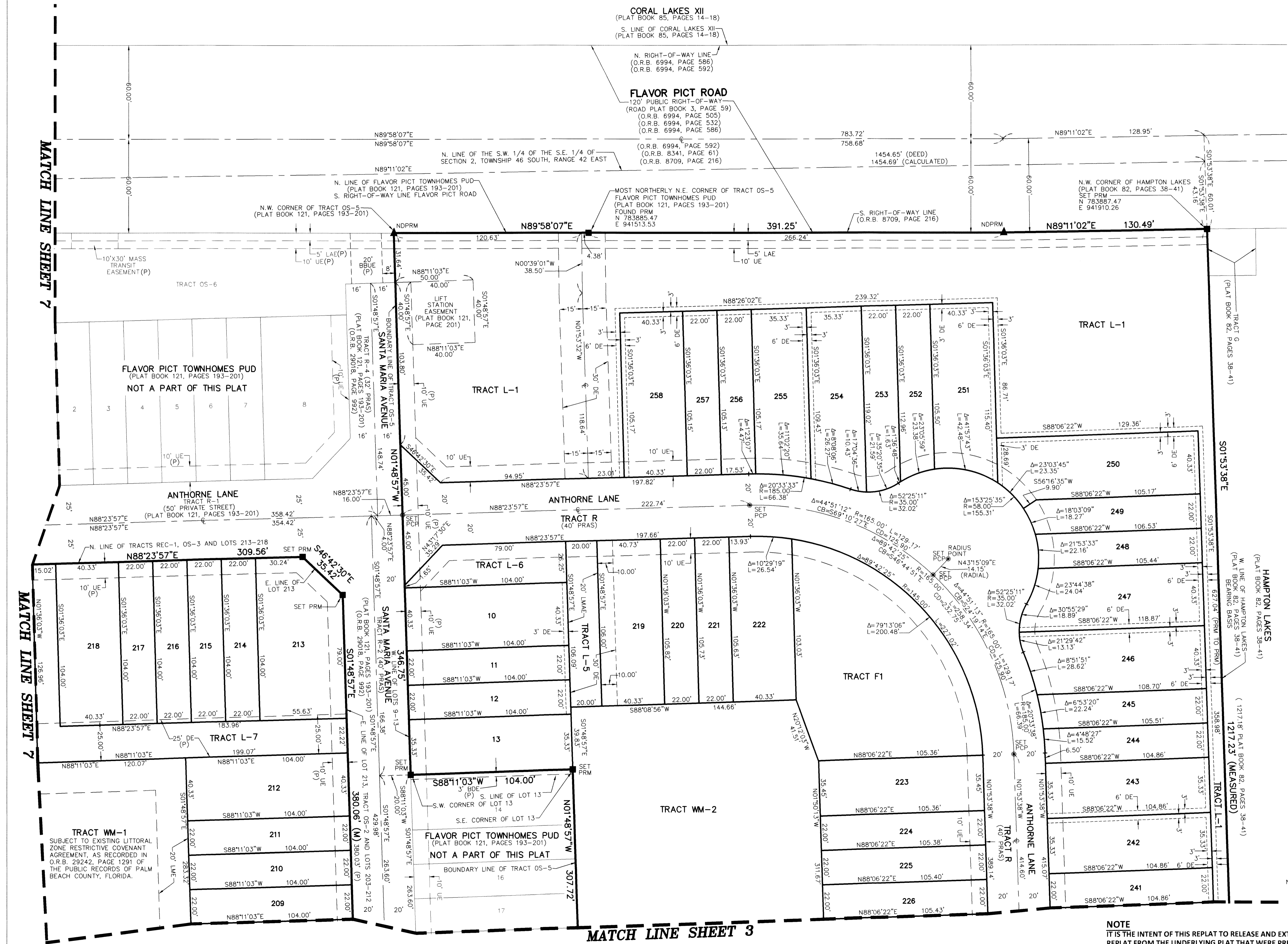


**NOTES**  
**COORDINATES, BEARINGS AND DISTANCES**  
 COORDINATES SHOWN ARE GRID  
 DATUM = NAD 83 1990 ADJUSTMENT  
 DATUM = FLORIDA EAST ZONE  
 LINEAR UNIT = US SURVEY FEET  
 COORDINATE SYSTEM 1983 STATE PLANE  
 TRANSVERSE MERCATOR PROJECTION  
 ALL DISTANCES ARE GROUND UNLESS OTHERWISE NOTED  
 SCALE FACTOR = 1.0000339  
 GROUND DISTANCE X SCALE FACTOR = GRID DISTANCE  
 BEARINGS AS SHOWN HEREON ARE GRID DATUM,  
 NAD 83 1990 ADJUSTMENT, FLORIDA EAST ZONE.

**LEGEND/ABBREVIATIONS**

- CL - CENTERLINE
- DA - DELTA (CENTRAL ANGLE)
- BD - BUFFER DRAINAGE EASEMENT
- BBUE - CITY OF BOYNTON BEACH UTILITY EASEMENT
- CB - CHORD BEARING
- CD - CHORD DISTANCE
- DE - DRAINAGE EASEMENT
- DP - DISTANCE POINT
- FP - FLORIDA POWER & LIGHT CO.
- ARC - ARC LENGTH
- LAE - LIMITED ACCESS EASEMENT
- LB - LICENSED BUSINESS
- LMAE - LAKE MAINTENANCE ACCESS EASEMENT
- LME - LAKE MAINTENANCE EASEMENT
- L.W.D.D. - LAKE WORTH DRAINAGE DISTRICT
- N - NORTHING (WHEN USED WITH COORDINATES)
- O.R.B. - OFFICIAL RECORD BOOK
- PC - POINT OF CURVATURE
- PT - POINT OF TANGENCY
- PRAS - PRIVATE RESIDENTIAL ACCESS STREET
- R - RADIUS
- UE - UTILITY EASEMENT
- PRM - DENOTES PERMANENT REFERENCE MONUMENT  
 4" x 4" x 24" CONCRETE MONUMENT WITH  
 ALUMINUM DISK STAMPED "C&W PRM LB3591"
- PCP - DENOTES PERMANENT CONTROL POINT
- (P) - DENOTES FLAVOR PICT TOWNHOMES PUD, PLAT BOOK 121,  
 PAGES 193-201, PALM BEACH COUNTY RECORDS
- (M) - DENOTES MEASURED
- NDRPM - DENOTES PERMANENT REFERENCE MONUMENT SET NAIL AND DISC STAMPED "PRM" LB 3591

**NOTE**  
 IT IS THE INTENT OF THIS REPLAT TO RELEASE AND EXTINGUISH ALL EASEMENTS NOT SHOWN ON THIS  
 REPLAT FROM THE UNDERLYING PLAT THAT WERE PREVIOUSLY PLATTED, UNLESS OTHERWISE NOTED



MATCH LINE SHEET 3

MATCH LINE SHEET 7

MATCH LINE SHEET 7